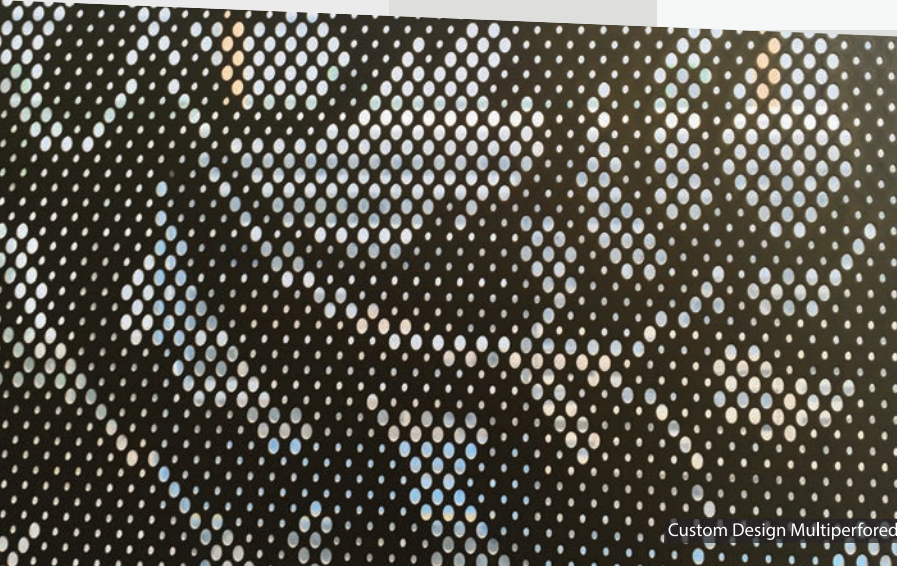


# ARCHITECTURAL METAL CLADDINGS

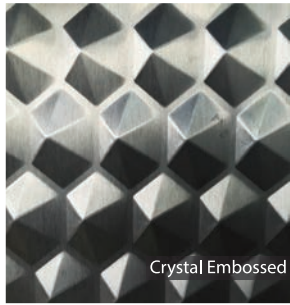
KASSO is majored in expanded mesh metal, perforated metal and laser pattern cut metal production, for double skin facades, suspended ceiling, sun louvre and construction elements applications offering project based solutions and products metal working company with high tech machinery park. Aim is to expand the opportunities metal sheet designs both in industrial and architectural applications. KASSO, created the "Architectural Metal Cladding" concept in construction sector.

KASSO is an engineering and fabrication company that is specialized in metal working industry since 1975. In 1986, expanded mesh and welded construction production has been involved in product range to widen opportunities in metal sheet manufacturing. KASSO Engineering's headquarters and production facility is under one roof in 7500 sqm area of enclosed floor space in Istanbul Anadolu Yakası Industrial Zone, located in industrial area of Istanbul.

Number of Employees	: 73
Major Player in	: 26 Countries
Production Capacity	: 48869 Mt / per year
Completed Projects	: 1355
On Going Projects	: 46



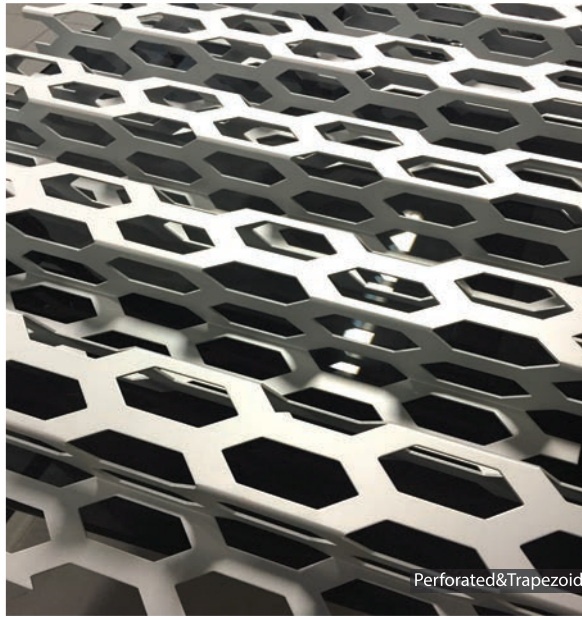
Custom Design Multiperforated



Crystal Embossed



Expanded Mesh



Perforated&Trapezoid

*\*Main fields are,*

- Double Skin Facades,
- Construction,
- Suspended Ceilings,
- Naval Engineering,
- White Goods,
- Decoration,

- Electrical, Chemical, Textile, Agriculture Applications.

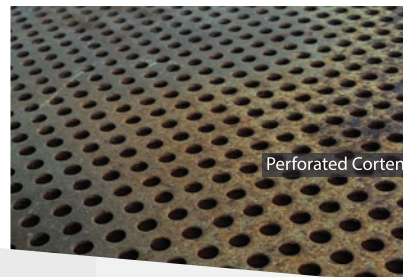
*\*with reference to Capacity Report, approved on Jan, 2016. Highest capacity in Metal Working Industry in Turkey. "Facts based on data of October '16.*



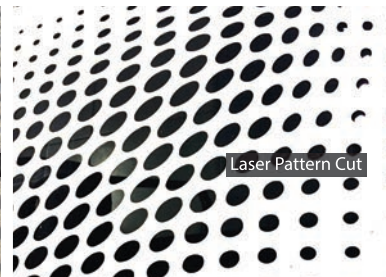
Expanded Mesh



Perforated and Embossed



Perforated Corten



Laser Pattern Cut



# KASSO; YOUR METAL SHEET PROCESSING CENTER



Süleyman Şah University  
Powder Coated Aluminum  
Expanded Mesh Facade



Bağ Pastanesi  
Powder Coated Aluminum  
Multiperforated Facade



Raif Dinçkök  
Cultural Center  
Perforated Corten Steel Facade



Bilkent Station  
Powder Coated Aluminum  
Expanded Mesh Facade



Yapı Kredi Banking Base  
Mirror Finished Stainless Steel Facade  
& Expanded Mesh Ceiling



Mermerler Plaza  
Powder Coated  
Aluminum  
Perforated Facade



Qatar Foundations Education City - Steel Facade Construction



Audi Showroom  
Anodised Aluminium Honeycomb  
Perforated Trapezoid Facade



Selçuk Ecza Headquarter  
Powder Coated Aluminum  
Laser Pattern Cut Facade



Piri Reis University  
Powder Coated Aluminum Expanded  
Mesh Facade